



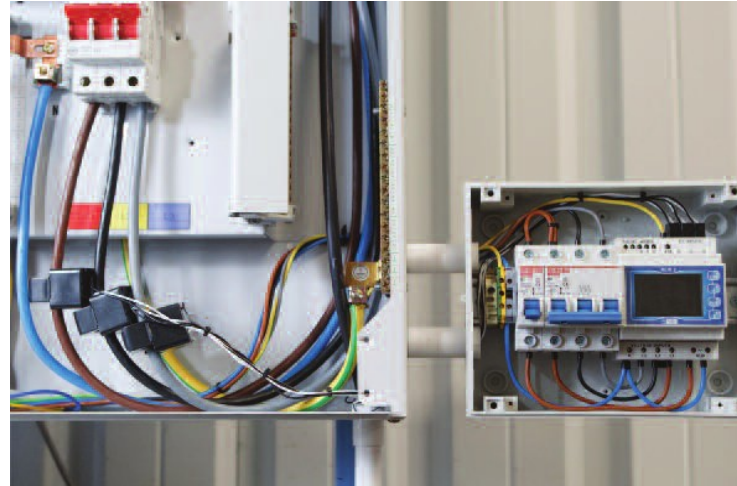
KLIK 3

Multi-function clip-on KWh meter module

The KLIK 3 digital metering system is an accurate and cost effective solution for measurement and display of all major electrical and power quality parameters. Its easy programming, mounting and user-friendly navigation make the KLIK 3 an ideal choice for customers who require reliable energy measurement.

The KLIK 3 is built to high quality standards in the UK and utilises the latest microprocessor and manufacturing technology.

The product features a DIN-rail enclosure, backlit LCD display and user programmable CT ratios, all accessible via an intuitive user interface. KLIK 3 measures 17 electrical parameters including total harmonic distortion (THD) measurement up to the 31st harmonic.



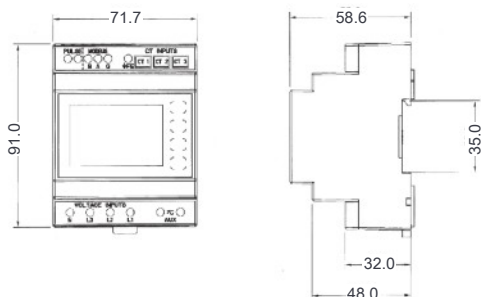
Also works with Flexeclamp clip on CT's.

Features

- ✔ Backlit LCD screen
- ✔ True RMS measurement
- ✔ Modbus and Pulsed output as standard
- ✔ Works with Flexeclamp clip on CTs
- ✔ Long distant wiring with selected CTs
- ✔ User programmable system configuration
- ✔ Programmable CT ratio
- ✔ Simple navigation
- ✔ Import and Export KWh
- ✔ DIN-rail enclosure DIN 43880



Approvals		
IEC 61326		
IEC 61010-1		
IEC 62053-21		
Parameters		
Button	Screen	Parameters
V/Hz	1	Volts L1, L2, L3 to N
	2	Volts L1 - L2
		Volts L2 - L3
		Volts L3 - L1
	3	Frequency
A	4	Volts L1, L2, L3 to N THD%
	5	Volts L1 -L2 THD%
		Volts L2 - L3 THD%
		Volts L3 - L1 THD%
	1	Current L1, L2, L3
P/PF	2	Neutral Current
	3	L1, L2, L3 Current Max Demand
	4	Neutral Current Max Demand
	5	Current L1, L2, L3 THD%
	1	kW
E		kVAr
		kVA
	2	kW Max Demand
	3	Power Factor
	1	Import kWh
	2	Export kWh
	3	Import kVArh
	4	Export kVArh



Specifications

Input

Nominal input voltage
Max. continuous input overload voltage
Max. short duration input voltage

100-289V AC L-N (173-500V AC L-L)
120% of nominal

Nominal input voltage burden
Nominal input current
Max. continuous input overload current
Max. short duration input current

2 x range maximum (1 second application repeated 5 times at 5 minute intervals)
< 0.2VA per phase
333mVolts AC RMS from current transducers
120% of nominal

Frequency
System CT primary values

10 x nominal (1 second application repeated 5 times at 5 minute intervals)
45-66Hz
1 to 9999

Auxiliary

Operating range

110-240V AC +/- 10% 50/60 Hz
Or 100V to 335V DC +/- 10%
<5VA

Consumption

Accuracy

Voltage (V)
Current (A)
Neutral current calculated (A)
Frequency (Hz)
Power factor (PF)
Active power (W)
Reactive power (VAr)
Apparent power (VA)
Active energy (kWh)
Reactive energy (kVArh)
THD
Response time

0.5%
0.5%
4%
0.1 Hz
1% of unity
+/- 1% of range
+/- 1% of range
+/- 1% of range
Class 1 (IEC 62053-21)
+/- 1% of range
1% up to 31st harmonic
1sec

Output

Pulse output relay
Contact rating
Type
RS485 Modbus output module
Type
Baud rate

1
50mA max at 250V AC
Solid state relay
1 Modbus channel
2-wire half duplex
2400, 4800, 9600, 19200, 38400

Enclosure

Enclosure style
Dimensions

DIN-rail
72x90mm (width x height) as per DIN 43880
IP52
IP30
Polycarbonate to UL94V0
300g
Shrouded screw-clamp 0.05-4mm wire
CT terminals spring loaded 0.2 -0.8mm wire

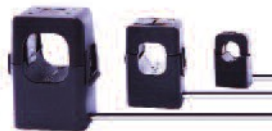
Front protection rating
Case protection rating
Material
Weight
Terminals

Environment
Operating temperature
Storage temperature
Relative humidity
Shock
Vibration
Dielectric voltage

-10°C to +55°C
-20°C to +70°C
0-90% non-condensing
30g in 3 planes
10Hz to 50Hz
Withstand test 3.25kV rms 50Hz for 1 minute between comms and measuring inputs, comm and aux, aux and measuring inputs

KLIK CT Selection

CT Style	CT Part Number	Nominal Size ID/length	Nominal Amps range Available	Accuracy PF-0.5 to unity temp 25°C 50/60Hz	Max overall Cable Diameter
Hinged Clip On	SFE16K3-50	16mm	50A	1%	16mm
	SFE16K3-100	16mm	100A	1%	16mm
	SFE24K3-200	24mm	200A	1%	24mm
	SFE24K3-300	24mm	300A	1%	24mm
	SFE36K3-400	36mm	400A	1%	36mm
	SFE36K3-600	36mm	600A	1%	36mm
Flexeclamp Clip Round	FL300K3	300mm length	upto 1000	2.0%	85mm
	FL400K3	400mm length	upto 1500	2.0%	110mm
	FL500K3	500mm length	upto 3000	2.0%	140mm
	FL600K3	600mm length	upto 3000	2.5%	170mm
	FL700K3	700mm length	upto 3000	3.0%	200mm



Other Amp ranges are available. A range of hinged clip-on CTs suitable for wiring long distances are available. Please contact the Technical Team for further details.

In pursuance of our policy of continued improvement Sinergy Meters reserve the right to change the design or specification of its products without notification



Sinergy Meters

Unit 1, Union Road Estate
Union Road
Macclesfield
Cheshire
SK11 7BN
sales@sinergymeters.com
www.sinergymeters.com

